

VERITAS®

Power Stitch 17
Power Stitch Pro



EN Contents

Introduction	2
Safety instructions.....	3
Technical data	4
Disposal	5
Explanation of the graphic symbols	5
Overview	6
Sewing.....	7
Inserting the needle	8
Attaching and removing the presser foot.....	9
Winding and inserting the bobbin	10
Threading the upper thread	11
Needle threader	12
Thread tension	12
Starting to sew	13
Maintenance.....	13
Troubleshooting.....	14

Introduction

Congratulations on the purchase of your sewing machine. You have purchased a quality product which has been manufactured with the utmost care and which, with proper maintenance, will give you many years of good service. This sewing machine is made for sewing textiles and leather.

Important: Although this machine has the possibility to sew thick fabrics and leather, this is a household machine and it is not suitable for professional / industrial use. Please always follow the instructions for the needle/fabric/thread combinations (see QR code, chapter "Starting to sew"). Failure to do so will invalidate the warranty.

Before using the machine for the first time, please read the instruction manual carefully and pay particular attention to the safety instructions. Anyone who is not familiar with this manual is not allowed to use the machine. Hand over all documents when passing the machine on to third parties.

We wish you much pleasure and great sewing success! Questions about the machine, service and customer care:

toll-free service number :
E-mail:

00800 333 00 777
service-en@veritas-sewing.com

Crown Technics GmbH
Service Center
c/o Sertronics GmbH
Ostring 60
DE-66740 Saarlouis



Service & information:
www.powerstitch.veritas.guide



Safety instructions

Read all the safety instructions and information before using the sewing machine. Failure to comply with the safety instructions and information may cause electric shock, fire and/or serious injury. Keep all safety instructions and information in a suitable place near the appliance for future reference. Also hand over the user manual when passing on the device to third parties. The term "device" used in the safety instructions refers to the sewing machine (with power cord and foot controller).

Safety at the workplace – This sewing machine is intended for household use only. Be sure to use the sewing machine in the temperature range from 5°C to 40°C. If the temperature is excessively low, the sewing machine can fail to operate normally. Do not install the device at an altitude of more than 2000 meters above sea level. Do not use the device if it is wet or in humid environment. Always use the device only in dry rooms. Place the sewing machine on a stable, flat, dry and stable work surface. Keep your work area clean and well lit. Disorder or unlit work areas can lead to accidents. Install the power cord so that there is no tripping hazard. Keep children and other persons away while using the device. You may lose control of the device if distracted.

Electrical safety – Only use the original power cord supplied with the sewing machine. Other power cords may damage the device. Do not use the supplied power cord with other devices. Make sure that the mains voltage corresponds to the voltage indicated on the labelling of the device (devices labelled 230V or 240V can also be operated with 220V). The connection plug of the device must fit into the socket. The plug must not be modified in any way. Unmodified plugs and matching sockets reduce the risk of electric shock. Avoid body contact with grounded surfaces such as pipes, heaters, cookers and refrigerators. There is an increased risk of electric shock if your body is grounded. Keep the unit away from rain or wet conditions. The ingress of water into the device increases the risk of electric shock. Do not misuse the power cord to pull the plug out of the socket. When unplugging, grab the plug and not the power cord. Keep the power cord away from heat, oil, sharp edges or moving parts of the device. Damaged or tangled power cord increases the risk of electric shock.

Safety of persons – Be careful, pay attention to what you are doing and use common sense when working with the device. Do not use the device when you are tired or under the influence of drugs, alcohol or medication. A moment of carelessness when using the device can lead to serious injury. Avoid unintentional starting up. Make sure the device is switched off before connecting it to the power supply, picking it up or carrying it. If you connect the device to the power supply when it is switched on, this can lead to accidents. Wear appropriate clothing. Do not wear loose clothing or jewelry. Keep your hair, clothing and gloves away from moving parts. Loose clothing, jewelry or long hair can be caught by moving parts. Careful handling and use of the device – Do not overload the device. Use the designated sewing machine for your sewing work. With a suitable sewing machine you will work better and safer in the specified power range. Do not use a device whose switch is defective. A device that can no longer be switched on or off is dangerous and must be repaired. Never place anything on the foot controller. Unplug the device from the wall socket before making any adjustments to the device, changing accessories or putting the device away. This precaution prevents the device from starting unintentionally. Keep the unused device out of the reach of children. Do not allow persons who are not familiar with the device or have not read these instructions to use the device. Sewing machines are dangerous when used by inexperienced people. Maintain the device with care. Check whether moving parts of the device function properly and are not jammed, whether parts are broken or damaged in such a way that the function of the device is impaired. Have damaged parts repaired before using the device. Many accidents are caused by poorly maintained sewing machines.

DANGER! DANGER OF LIFE AND ACCIDENT FOR TODDLERS AND CHILDREN! Cleaning and user maintenance must not be carried out by children without supervision. Use the device, accessories or insertion tools (e.g. needles, bobbins, etc.) according to these instructions. Take into account the working conditions and the activity to be carried out. Use of the device for applications other than those for which it is intended may lead to dangerous situations.


Safety instructions for service – Have the device repaired only by qualified personnel and only with original spare parts. This ensures maintaining the safety of the unit. If the LED lamp is damaged or defective, it must be replaced by the manufacturer or its customer services to avoid hazards. The device may only be used with a specific foot controller and/or power cord in order to avoid hazards. If the foot controller and/or power cord is damaged or defective, it must be replaced by the manufacturer, its customer services or a similarly qualified person.

Safety instructions for all applications – This sewing machine is to be used for sewing household textiles. Observe all warnings, instructions, illustrations and data provided with the device. Failure to observe the following instructions may result in electric shock, fire and/or serious injury. This device is not intended for processing other materials (e.g. leather, canvas, sailcloth and similar heavy fabrics). Applications for which this device is not designed pose a risk; there is a danger of injury. Do not use any accessories that are not specifically intended and recommended for this device by the manufacturer. Just because you can attach the accessory to your device does not guarantee safe use. Keep other people at a safe distance from your work area. Keep the power cord away from moving accessories.

General – This device can be used by children aged from 8 years and above and persons with reduced physical, sensory or mental capabilities or lack of experience and knowledge if they have been given supervision or instruction concerning use of the device in a safe way and understand the hazards involved. Children must not play with the device. Cleaning and user maintenance shall not be made by children without supervision.

DANGER! DANGER OF LIFE AND ACCIDENTS FOR TODDLERS AND CHILDREN! Never leave children unattended with the packaging material. The packaging material poses a choking hazard. Children often underestimate the dangers. Always keep children away from the packaging material. This device is not a toy. Always disconnect the power plug before making any changes to the settings or changing accessories. Never operate the device if the ventilation openings are blocked. Keep the ventilation openings of the device and foot controller free of lint, dust and fabric waste. Always turn off the device when performing adjustments or work in the area of the needle, such as threading or changing needle, threading or changing bobbin, changing the presser foot and so on. Crown Technics GmbH can only guarantee the proper functioning of the device if the appropriate accessories are used. Only use the original power cord supplied with the sewing machine. Other power cords may damage the device. Do not use the supplied power cord with other devices. Obtaining practical information is recommended before using the device for the first time. If you are not familiar with the operation of sewing machines, we recommend that you attend an introductory course. Always check that the mains voltage matches the voltage indicated on the labelling of the device. Check the power cord for damage before use. If the power cord is damaged, replace it with an original cord that is only available from the manufacturer or its customer services. Never leave the device unattended when it is switched on. Unplug the device if you leave it unattended to avoid injury from accidental switch-on. Keep body parts, hair, clothing and gloves away from moving parts. Make sure that you do not come into contact with the running needle. Do not continue to use worn needles. If the power cord is damaged or cut during work, do not touch the power cord but disconnect the power plug immediately. Do not continue to use the device if the power cord is damaged; replace it with a new original power cord. Other power cords may damage the device. In the event of an electrical or mechanical malfunction, switch off the device immediately and disconnect the power plug. When leaving the sewing machine, immediately disconnect the mains plug from the socket. Disconnect the mains plug from the socket before carrying out maintenance and cleaning work.

Technical data

Type	Veritas Power Sitch 17 Veritas Power Stitch PRO
Weight	5,6 kg
Dimensions	396 x 168 x 298 mm
Rated voltage	230 V ~, 50 HZ
Power rating	90 W
Protection class	II 
Length power cable	≈ 1.8 m
Length foot control cable	130 /705H

Interference-free in acc. with EU Directive, TÜV Rheinland approved

Disposal



This product is subject to the provisions of European Directive 2012/19/EC. The symbol showing a wheeled bin crossed through indicates that the product requires separate refuse collection in the European Union. This applies to the product and all accessories marked with this symbol. Products identified with this symbol may not be discarded with normal household waste, but must be taken to a collection point for recycling electric and electronic appliances



This recycling symbol marks e.g. an object or parts of the material as valuable for recycling. Recycling helps to reduce the consumption of raw materials and protect the environment



.In accordance with the European guidelines for safety and EMC

Explanation of the graphic symbols



Explanation of the graphic symbols



Explanation of the graphic symbols



Certified by TÜV Rheinland



Safety tested according to accepted rules



Store / transport with this side up



Fragile, handle with care



Material symbol, important for recovery



Dispose packaging environmentally friendly



Dispose packaging environmentally friendly

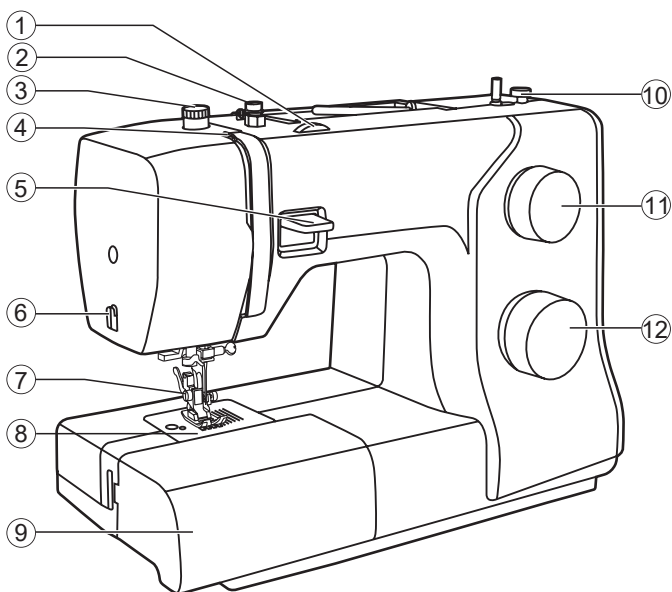


Choking hazard



Keep plastic bag away from small children

Overview



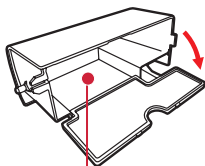
- ① Thread tension dial
- ② Bobbin thread guide
- ③ Presser foot pressure
- ④ Thread take-up lever
- ⑤ Reverse sewing button
- ⑥ Thread cutter
- ⑦ Presser foot
- ⑧ Needle plate
- ⑨ Sewing table and accessory box
- ⑩ Bobbin winder stopper
- ⑪ Stitch length dial
- ⑫ Pattern selector dial



Power Stitch foot



Non-stick foot



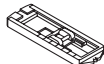
All-purpose presser foot



Zipper foot



Buttonhole foot



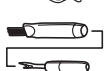
Button sewing foot



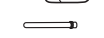
Overcasting foot



Seam ripper/brush



Second spool pin



Edge/quilt guide



Needles



Spool pin cap



Darning plate



L-screwdriver



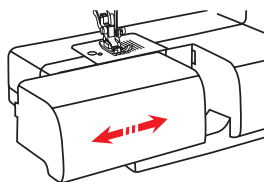
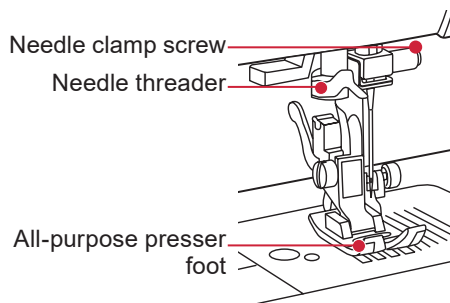
Jeans-Support



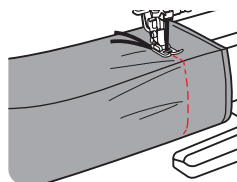
Bobbin



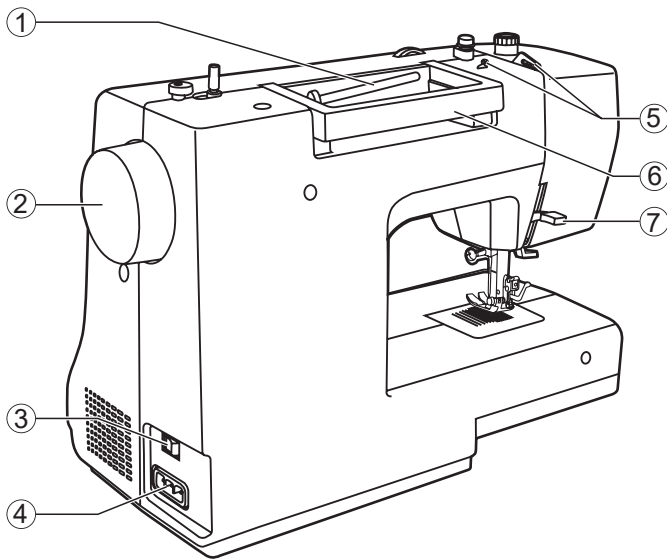
Felt cushion



Hold the sewing table horizontally, then pull toward the left to remove it from the machine. Attach the sewing table, and then push it to the right.



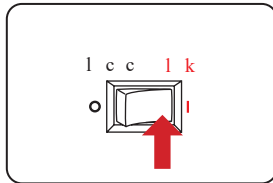
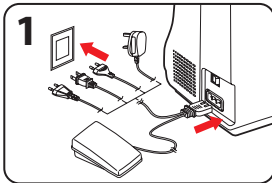
Hold the sewing table horizontally, then pull toward the left to remove it from the machine. Attach the sewing table, and then push it to the right.



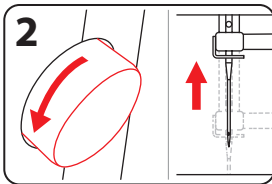
- ① Horizontal spool pin
- ② Handwheel
- ③ Main power switch
- ④ Power cord socket
- ⑤ Upper thread guide
- ⑥ Handle
- ⑦ Two-step presser foot lever

Sewing

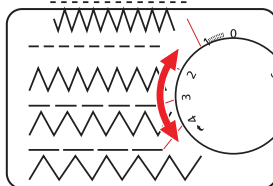
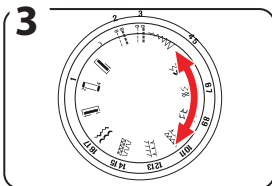
Make sure you follow the needle/fabric/thread combinations and use the suggested presser foot before sewing.



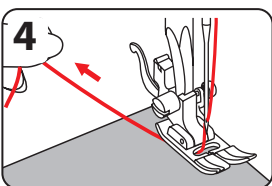
Put the machine on a stable table. Connect the machine to a power source as illustrated. Turn the power switch to on.



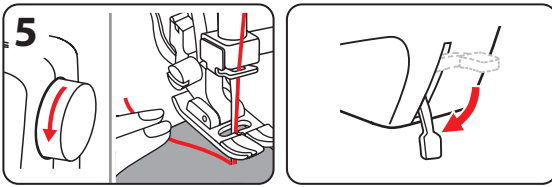
Turn the handwheel towards you (counterclockwise) to bring the needle to highest position. Raise the presser foot lifter.



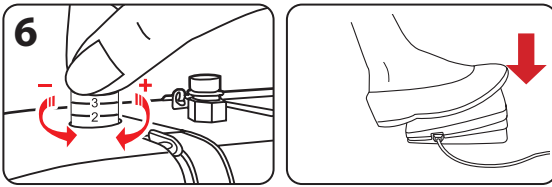
Turn the pattern selection dial to select a stitch, then adjust the stitch length. Generally speaking, the thicker the fabric, thread and needle, the longer the stitch should be.



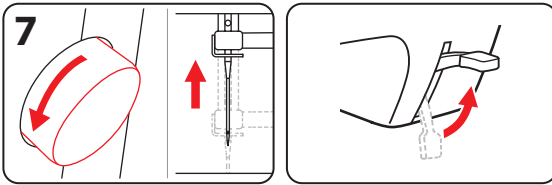
Place the fabric under the presser foot, pass the thread under the presser foot, and then pull out about 10cm of thread toward the rear of the machine.



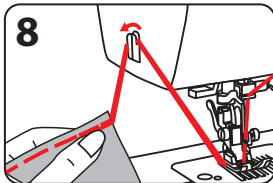
Turn the handwheel toward you (counterclockwise) to lower the needle into the fabric at the beginning of the stitching. Lower the presser foot lifter.



Adjust presser foot pressure. For very thin fabric, reduce the pressure. For heavy fabric, increase the pressure. Slowly press down the foot control to start sewing. Release the foot control to stop the machine. You can use reverse sewing by pressing the reverse sewing lever.



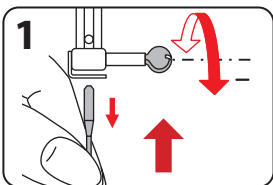
Turn the handwheel toward you (counterclockwise) to raise the needle. Raise the presser foot lifter and remove the fabric.



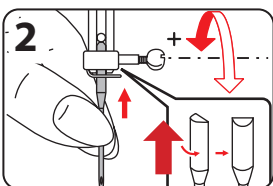
Guide both threads to the side of the face plate and into the thread cutter. Pull the threads down to cut them.

Inserting the needle

Change the needle regularly, especially when it shows signs of wear or if it causes problems. Turn the power switch to off ("O") when carrying out below operations!



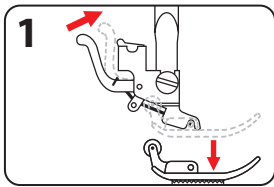
Turn the handwheel toward you to raise the needle then loosen the needle clamp screw to remove the needle.



When inserting a new needle, keep the flat side of the shaft to the back. Push the needle into the clamp until it touches the pin and stops. Then secure it by tightening the needle clamp screw.

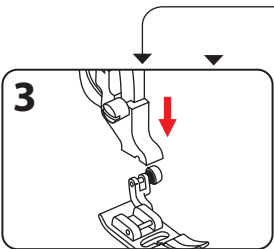
Attaching and removing the presser foot

Turn the power switch to off when carrying out any of the operations below! Always use the proper foot for the selected pattern. The wrong foot can cause the needle to break.



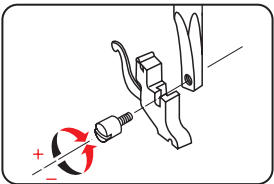
1 Lift the sewing foot lifter. Press the rear lever to release the sewing foot.

2 Select the best fitting foot...



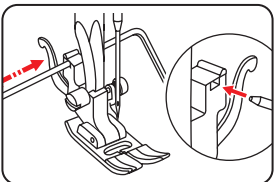
3 Lower the presser foot lifter until the recess meets the pin. The sewing foot is automatically attached to the presser foot holder.

Remove and insert the presser foot holder



Lift the presser foot lifter. Align it with the lower left side of the sewing foot bar. Hold the presser foot holder and tighten the screw.

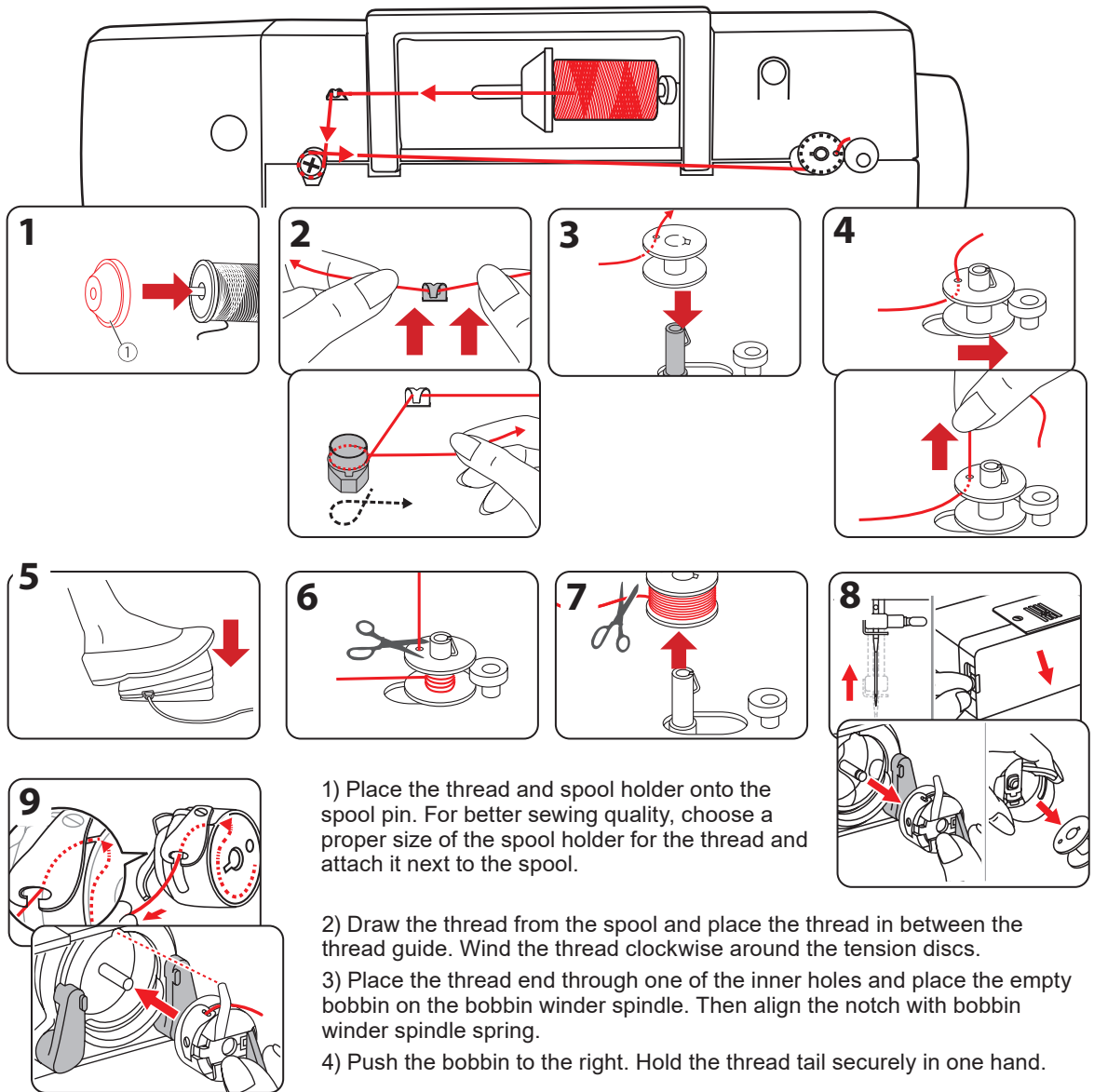
Insert the edge/quilting guide



Insert the edge and quilting guide into the slot as shown. Set the width according to your sewing applications.

	Cotton	M			
	Power Stitch foot	M			
	Canvas	M			
	Synthetic PU	M			
	Leather	M			

Winding and inserting the bobbin



1) Place the thread and spool holder onto the spool pin. For better sewing quality, choose a proper size of the spool holder for the thread and attach it next to the spool.

2) Draw the thread from the spool and place the thread in between the thread guide. Wind the thread clockwise around the tension discs.

3) Place the thread end through one of the inner holes and place the empty bobbin on the bobbin winder spindle. Then align the notch with bobbin winder spindle spring.

4) Push the bobbin to the right. Hold the thread tail securely in one hand.

5) Step on the foot control to start winding the bobbin.

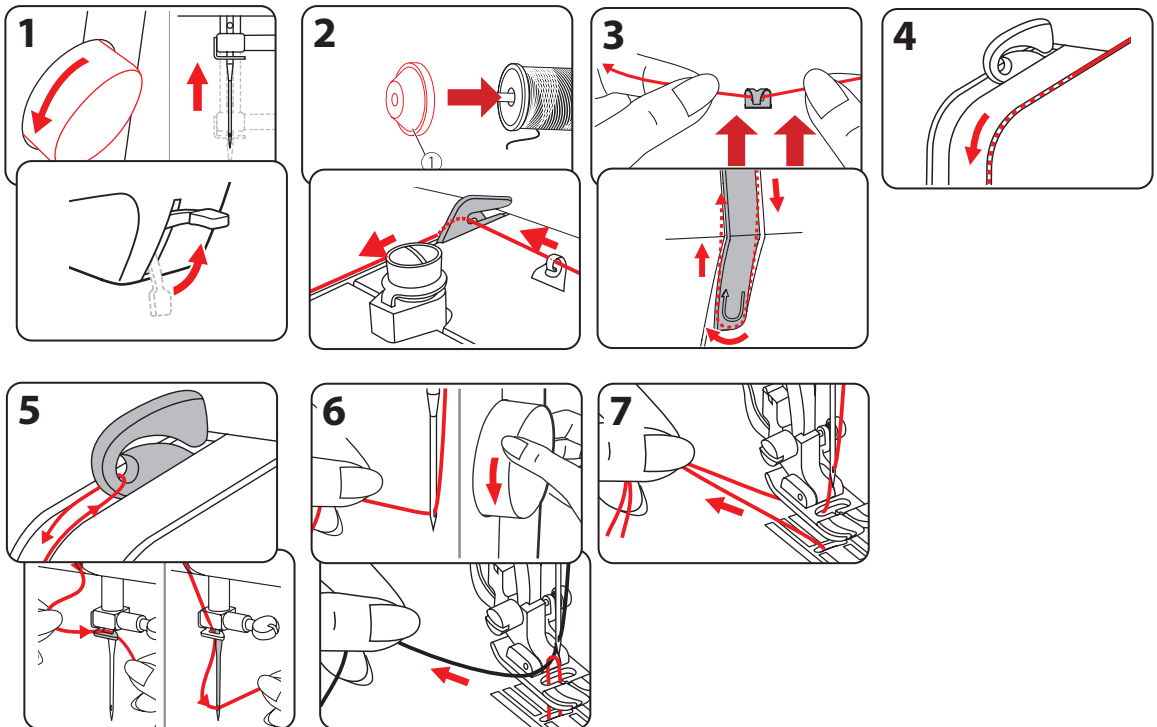
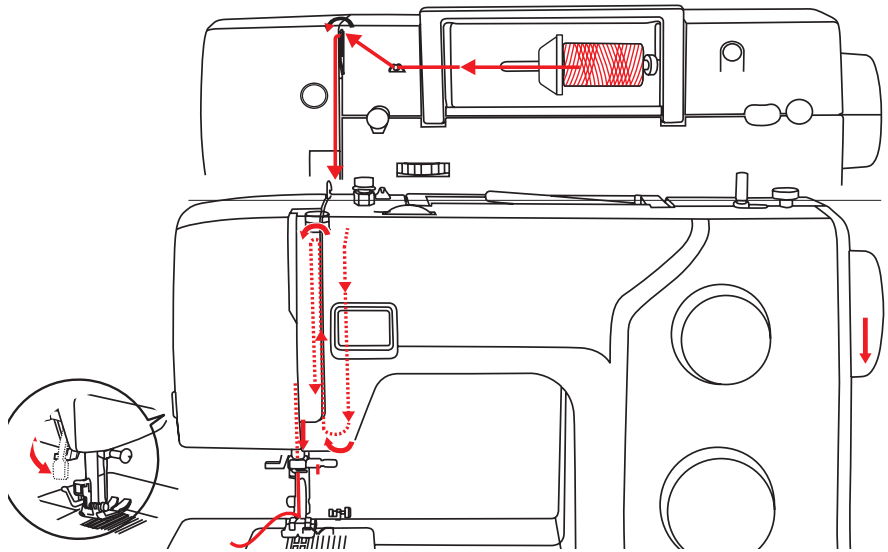
6) After the bobbin has wound a few rounds, stop the machine and cut the thread near the hole of the bobbin. Continue filling the bobbin until it is full. Stop the machine, then push the bobbin winder spindle to the left.

7) Cut the thread and then remove the bobbin. When the bobbin winder spindle is pushed to the right position, the machine is not allowed to sew and the handwheel will be locked.

8) The needle must be fully raised. Remove the sewing table, then open the hinged cover. Pull the bobbin case by the hinged latch. Remove the bobbin of the bobbin case.

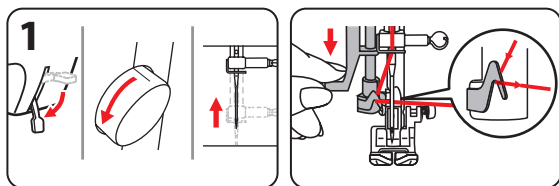
9) Insert the bobbin so that the thread runs in a clockwise direction. Pull the thread from the slot under the tension spring and through the opening. Leave a 15 cm tail of thread. Hold the bobbin case by the hinged latch. Make sure the bobbin case finger fits into the notch at the top of the race as shown in. Close the hinged cover.

Threading the upper thread

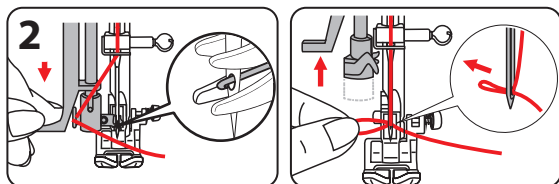


- 1) Turn the handwheel towards you (counterclockwise) to bring the needle to highest position. Raise the presser foot lifter
- 2) Place the thread and spool holder (1) onto the spool pin. For better sewing quality, choose a proper size of the spool holder for the thread and attach it next to the spool.
- 3) Draw the thread from the spool and place the thread in between the thread guide. Guide the thread ahead and pull the thread through the pre-tension spring as illustrated.
- 4) Continue to guide the thread into the silver discs to keep the thread in proper tension. Pass the thread under the take-up spring then pull it upwards as arrow marks illustrated.
- 5) Pull the thread to the top then pass the thread through the slotted eye of the take-up lever. Guide it down afterwards. Pass the thread behind the flat, horizontal thread guide. Pull the end of it through the needle from front to rear and pull out about 10 cm of thread.
- 6) Hold the upper thread with your left hand. Turn the handwheel counter-clockwise to lower the needle down below the needle plate then raise it to bring the bobbin thread up.
- 7) Pull both threads to the back under the presser foot.

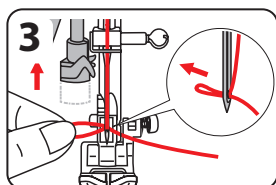
Needle threader



1) Lower the presser foot lifter. Raise the needle to its highest position by turning the handwheel toward you until the mark matched with the line on the machine. Press down the needle threader for a certain distance and cross the thread over the thread guide.



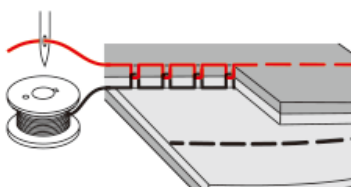
2) Press down the needle threader as far as it goes. The needle threader turns automatically to the threading position and the hook pin passes through the needle eye. Take the thread in front of the needle and make sure it is under the hook pin.



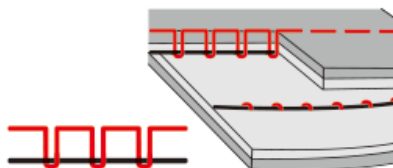
3) Hold the thread loosely and release the lever slowly. The hook turns and passes the thread through the needle eye forming a loop. Pull the thread through the needle eye.

Thread tension

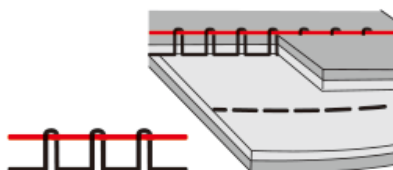
Proper tension setting is important for sewing. There is no single tension setting appropriate for all the stitches. In case of problems you will find here the possible cause together with possible functions and fabrics.



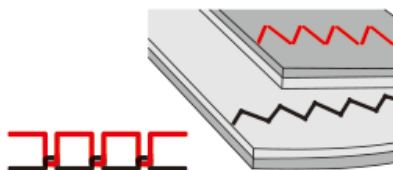
Normal thread tension for straight stitch sewing.



Thread tension is too loose for straight stitch sewing. Turn the dial to the higher number



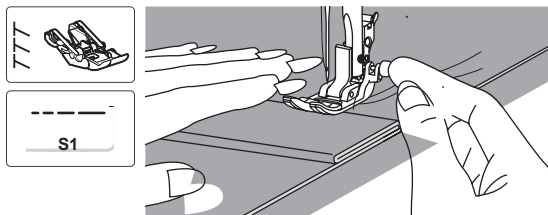
Thread tension is too tight for straight stitch sewing. Turn the dial to the lower number.



Normal thread tension for zig zag and decorative sewing. Correct thread tension is when a small number of the upper thread appears on the bottom side of fabric.

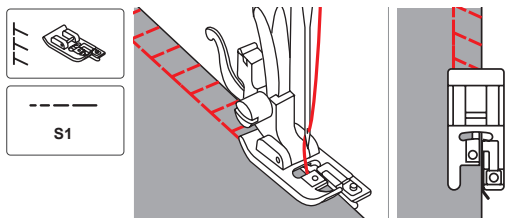
Starting to sew

Sewing heavy fabric



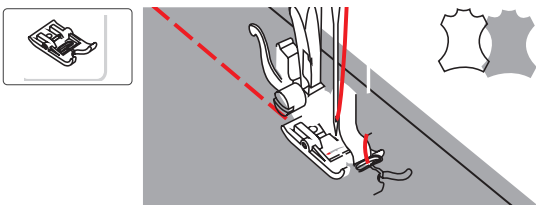
Use the extra Power Stitch foot included for heavy fabrics. It ensures that sewing heavy fabrics or multiple layers of fabric is easy and smooth.

Overcasting



Sewing the overcasting along the edge of the fabric so that the needle drops (1) over the edge of the fabric on the right side.

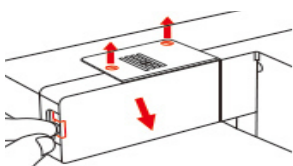
Non-stick foot



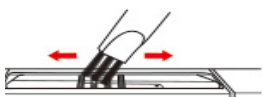
Due to the special coating on the bottom of this foot, it's perfect for sewing hard-to-feed fabrics, like leather, foam, plastic, imitation leathers and plastic-coated fabrics, such as vinyl.

Maintenance

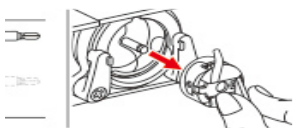
Unplug the power cord from the wall outlet, before carrying out maintenance work;



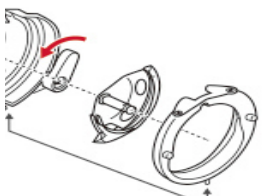
Raise the needle completely by turning the handwheel. Remove the slide-on table and then open the hinged cover. Unscrew the throat plate screw with the screwdriver



Clean the feed dog and bobbin case with a brush.



Remove lint and thread remnants regularly! When inserting and removing the bobbin, the needle must be in the highest position. Take out the bobbin case. Turn the two shuttle holders outward. Remove the shuttle bracket and the hook and clean them with a soft cloth. Lubricate in places (1-2 drops) with sewing machine oil.







Replace the gripper. Attach the shuttle track brackets and make sure, that the lower pin fits into the recess. Fold back the two hook holders. back. Insert the bobbin case and bobbin and replace the needle plate.

Troubleshooting

In case of problems you will find here the possible cause together with possible unctons and fabrics. corrections. Call your dealer when the problem can't be solved.

Problem	Cause	Correction
Upper thread breaks	<i>The thread tension is too tight.</i>	<i>Reduce the thread tension (to lower number).</i>
	<i>The thread is wound around the spool holder pin.</i>	<i>Remove the reel and wind up the thread onto the reel.</i>
	<i>The needle is damaged.</i>	<i>Insert a new needle.</i>
Bobbin thread breaks	<i>The bobbin case is threaded wrong.</i>	<i>Check both bobbin and bobbin case if on the correct position.</i>
Skipped stitches	<i>The needle is not inserted correctly.</i>	<i>Remove and reinsert the needle.</i>
	<i>The needle is damaged.</i>	<i>Insert a new needle.</i>
	<i>The wrong size needle has been used.</i>	<i>Choose a needle to suit the thread.</i>
	<i>The presser foot is not attached correctly.</i>	<i>Check and attach it correctly.</i>
Needle breaks	<i>The needle is not correctly inserted.</i>	<i>Insert the needle correctly.</i>
	<i>Wrong needle size for the fabric.</i>	<i>Choose a needle to suit the thread and fabric.</i>
	<i>The wrong presser foot is attached.</i>	<i>Select the correct presser foot.</i>
	<i>The upper thread tension too tight.</i>	<i>Loosen the upper thread tension.</i>
Loose stitches	<i>The bobbin case is not threaded correctly.</i>	<i>Thread the bobbin case as illustrated.</i>
	<i>The thread tension is wrong.</i>	<i>Correct the thread tension.</i>
Seam gather or pucker	<i>The needle is too thick for the fabric.</i>	<i>Select a correct needle size.</i>
	<i>The stitch length is wrong.</i>	<i>Adjust the stitch length.</i>
	<i>The thread tension is too tight.</i>	<i>Loosen the thread tension.</i>
Seam puckering	<i>The needle thread tension is too tight.</i>	<i>Loosen the thread tension.</i>
	<i>The needle is too heavy for the fabric being sewn.</i>	<i>Choose a needle to suit the thread and fabric.</i>
	<i>The stitch length is too long for the fabric.</i>	<i>Adjust the stitch length shorter.</i>
	<i>Sewing on thin fabric.</i>	<i>Sew with a stabilizer material under the fabric.</i>
Thread has jammed	<i>Thread is caught in the hook. The feed dogs are packed with lint.</i>	<i>Remove the upper thread and bobbin case, turn the handwheel backwards and forwards and remove the thread remnants.</i>
The machine is noisy	<i>Fluff have collected on the hook or needle bar.</i>	<i>Clean the hook and feed dog.</i>
The sewing machine doesn't operate	<i>The machine is not turned on.</i>	<i>Turn on the machine.</i>
	<i>The machine is not plugged in.</i>	<i>Connect the power cord to the electric outlet.</i>

VERITAS®

-  www.veritas-sewing.com
-  Veritas Sewing
-  veritassewing
-  Veritas Sewing



QSG_A4_Power Stitch_DE EN FR IT NL_v1_20230908